

Thank you for choosing to update your GARMIN Aviation Handheld GPS using our online update process. These instructions are intended to illustrate the update process and guide you through each step. If you encounter any difficulties during the update, please refer to the Troubleshooting information at the end of this document.

1

Begin by logging onto the GARMIN website, at [www.garmin.com](http://www.garmin.com), and click on the “Aviation” button that appears in the left-hand column. Next, look for the “Online Jeppesen NavData” button at the top of the page. Click on this button to display the web page shown to the right. This web page shows the latest pricing for single and annual updates. New updates are issued every 28 days and posted on the GARMIN website prior to the start of the update cycle. If in doubt about the current update cycle, refer to the effective dates listed at the bottom of this web page.



Look for this button on the Aviation home page.

**Jeppesen Aviation Database Update for GARMIN Handheld GPS**

Welcome to the Jeppesen Aviation Database Update web page. Completing this process will allow you to download online database updates to your GARMIN handheld aviation GPS, giving you quicker access to time-critical data. You won't need to wait for mailed database updates on diskette.

During this process, you will download a file with the current database. You will also receive a code to unlock it.

**Pricing**  
These online Jeppesen updates are affordably priced at the following rates:

- Single Update (\$35.00)
- Annual Service (\$295 for 13 consecutive updates) **\*Great Savings!**

Please note: Updates are available every 28 days. For your convenience, they are posted on this website 10 days before their effective date. If you miss a cycle, we cannot provide a refund.

**Current Cycle**

Database Cycle	Cycle Number	Date Available	Effective Dates
Current	0107	Now	07/12/2001 - 08/08/2001
Next	0108	07/30/2001	08/09/2001 - 09/05/2001

Continue

Copyright © Garmin Corporation 1998-2001  
All rights reserved.  
[Privacy Statement](#)

2

Click on the **Continue** button at the bottom of the page to display an overview of the update steps (an abbreviated form of this document). Near the bottom of the page is a section titled “Please select a handheld aviation product.” Click on (down arrow) adjacent to this section to display a list of applicable GARMIN aviation handheld models (as illustrated at left). From this list select the description which matches the aviation handheld model you wish to update.

At the bottom of this page is a button titled “View Coverage Areas” (). Click on this button to view a world map presentation of the areas covered by each database.

3

You may observe some overlap in the coverage areas—especially between any Atlantic and Pacific International coverage areas. To view a complete list of which countries are included in a particular database coverage area, use the scroll bar under the coverage area name (at the bottom of the page).

Once you have decided which coverage area best suits your needs, click on a button at the bottom of the page which corresponds to the desired coverage area name (e.g., “Americas”).

**Aviation Databases - Coverage Areas**

The product you selected is the: **GPS 92 System**

Select a database from the table below (click on one of the databases names below - note that a detailed list of countries in the coverage area of each database is listed below the button):

Americas	Atlantic International	Pacific International
Alaska (USA) Anguilla Antarctica (Argentina/Chile) Antigua	Ad Dakhla Albania Algeria Angola Armenia	Afghanistan American Samoa Armenia Australia Azerbaijan

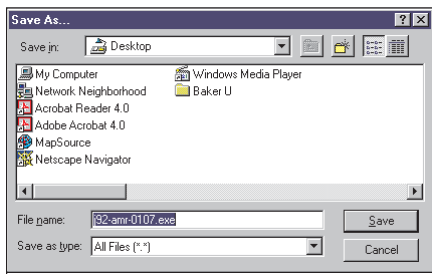
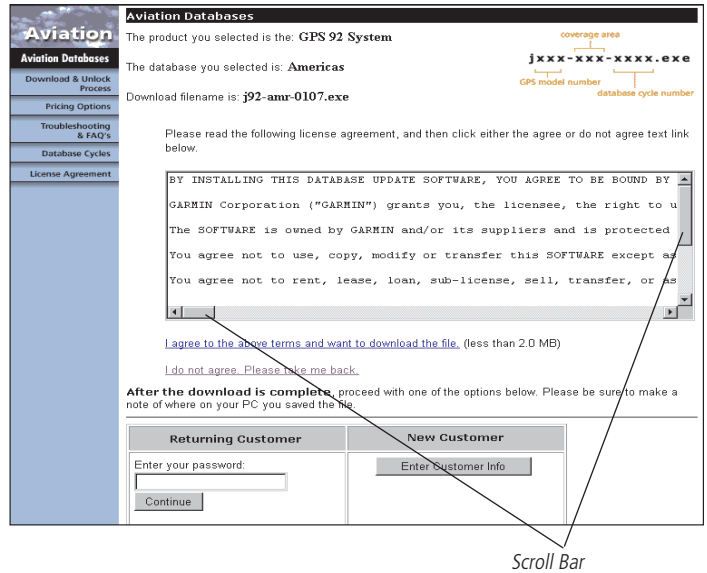
Coverage Area Name

Scroll Bar

4

Once the coverage area is selected, an information page appears which shows the GPS model and coverage area selected, the name of the file that will be downloaded, and the software license agreement. Please take a few moments to read the software license agreement. You can view additional license agreement text using the scroll bar.

After you have read the license agreement, agreed to the terms of the license agreement, and verified that the correct GPS model and coverage area is selected, click on "I agree to the above terms and want to download the file." (NOTE: If you do not agree to the terms of the license agreement, click on "I do not agree. Please take me back." or simply exit the GARMIN website.)



5

When you click to agree to the license terms, a Windows "Save As..." dialog box will appear on your PC screen, as illustrated at left. Select the folder or directory in which the database file will be stored, then click on the **Save** button. Refer to your Windows documentation if you need additional information about saving files.

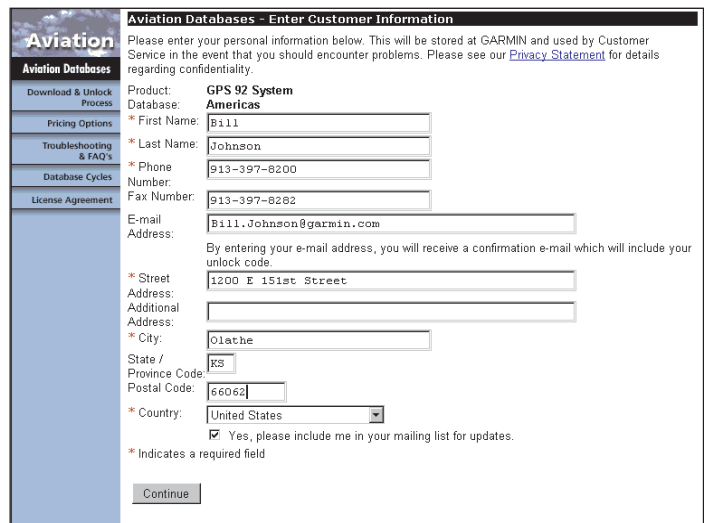
Download speed will vary depending upon your connection speed. For a dial-up connection at 28.8K baud, it may take 10-15 minutes to download the database file. If you experience connection problems, you can easily restart the download or wait until the connection problem is resolved. Remember, you have not paid for any update to this point, so you can make as many download attempts as necessary. The file you download is locked and, after downloading, you will proceed with additional steps to unlock the file. If you will be proceeding with the update, **PLEASE LEAVE YOUR WEB BROWSER OPEN** and on the license agreement page.

6

When the download is complete, proceed on the GARMIN website by clicking on the **Enter Customer Info** button. (NOTE: If you are a returning customer, you will be issued a password to use each time you download a database file from the GARMIN website. Enter this password in the "Returning Customer / Enter your password" data entry box at the bottom of the page.)

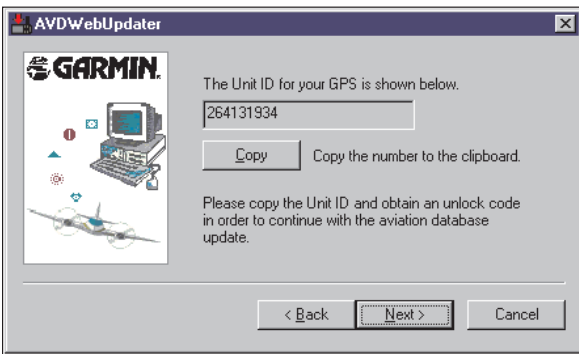
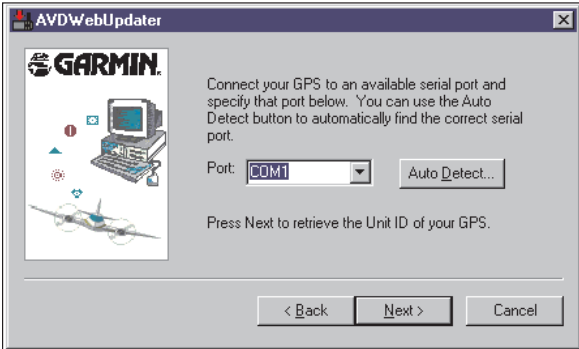
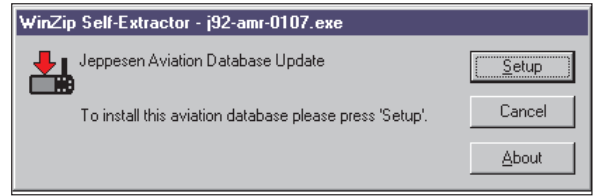
On the customer information page, enter your first and last name, phone number, email address and street address. If you would like to be on our mailing list to automatically receive any product update information, check the box next to "Yes, please include me in your mailing list for updates." Once all information has been entered, click on the **Continue** button.

The web page will now ask for a unit ID. **STOP at this point, but leave your web browser open!** You will need to run the file you previously downloaded to extract your unit ID. Once you have the unit ID you can return to this web browser page, enter the ID number and receive an unlock code.




7

Locate the file you downloaded (in step 5) on your PC. Double-click on this file or use the Windows "Run..." command. The file is a self-extracting archive, which will automatically retrieve the files you need and launch the AVDWebUpdater program (when you click on the **Setup** button). The AVDWebUpdater opening page will again display the GPS model and database coverage area. Click on the **Next >** ("Next") button to proceed.



8

Connect your GPS unit to a serial communications port on your PC. (NOTE: You will need a PC Interface Cable to connect your GPS unit to your PC. PC Interface Cables may be purchased from our online store or through your local GARMIN dealer.) Click on  (down arrow) adjacent to the "Port:" data field. From this list, click on the serial communications port to which the GPS is connected. If you are uncertain which communication port you are connected to, click on the **Auto Detect...** button. With the proper communications port selected, click on the **Next >** button to proceed.

The AVDWebUpdater program will query the GPS unit and display the unit's ID number. **THIS NUMBER MUST BE RETAINED** and used on the GARMIN website to receive your unlock code. You may wish to write the unit ID down for future reference.

Click on the **Copy** button to save the unit ID to the Window's clipboard. This step saves the hassle of having to retype the ID on the GARMIN website page.

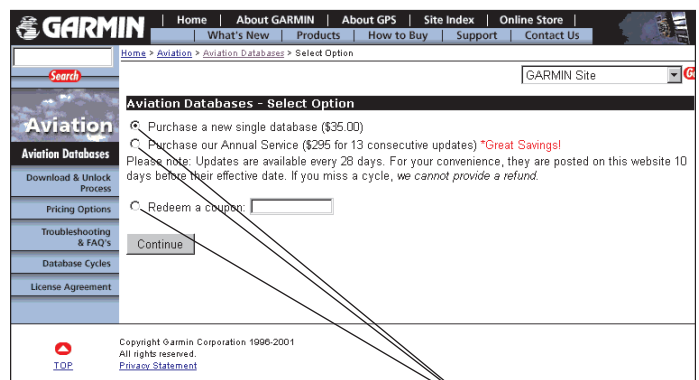
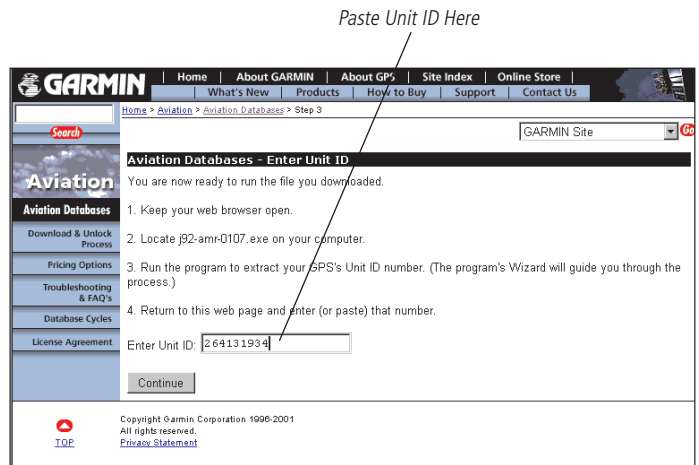
9

Return to the web browser and paste the unit ID into the box labeled "Enter Unit ID". You may do this using your web browser's Edit/Paste menu option or using a control key shortcut (e.g., CTRL-V). If you are unable to paste the unit ID from the Windows clipboard, type the ID in manually.

Once the unit ID is entered, click on the **Continue** button to proceed to the next web page. Purchase options are presented to buy a single update, purchase an annual subscription (at a reduced per-update price), or to redeem a coupon you may have received from GARMIN or your dealer for a free database update. Latest pricing for single and annual updates will appear on this web page.

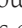
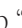
Click on the open bullet adjacent to the desired purchase option. When selected, a small black circle will appear in the open bullet next to the desired option. If you have selected "Redeem a coupon:", enter the coupon number as it appears on your coupon.



To proceed to the next web page, click on the **Continue** button.

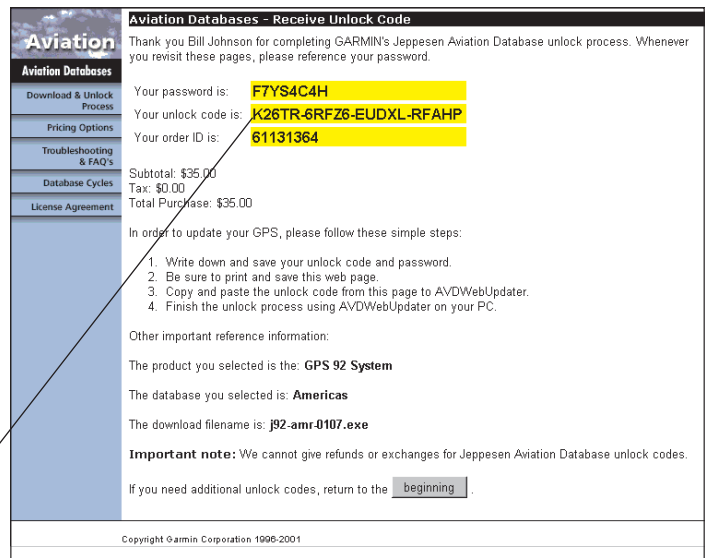
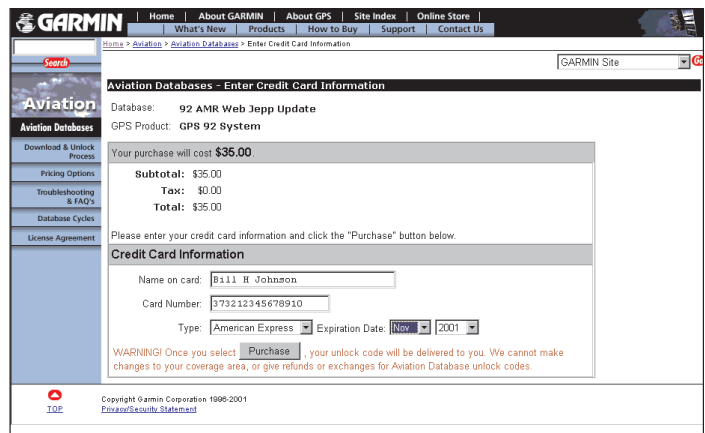


Click Here to Select a Purchase Option

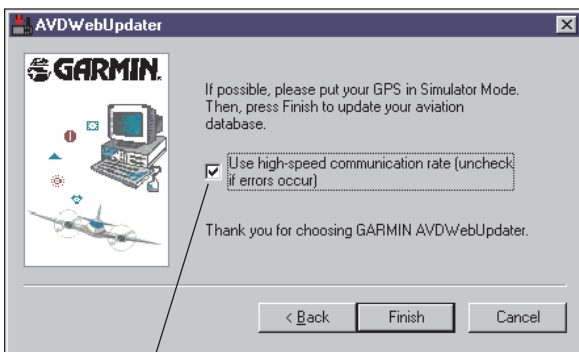
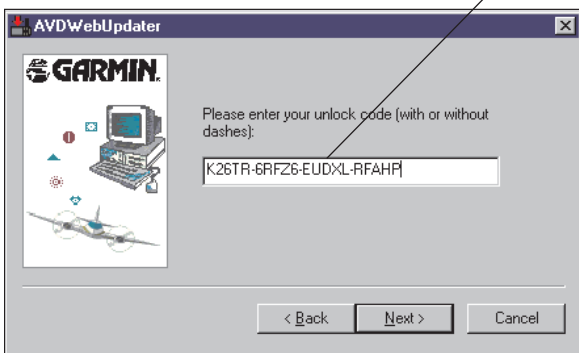
This is the final step to purchasing your database update. Verify that the correct database version and GPS model appears at the top of the page. Your purchase price, including any applicable sales tax, is listed on the middle of the page.

At the bottom of the page, enter your credit card information. Enter your name as it appears on your credit card and the card number. Next, click on  (down arrow) adjacent to the card type and select the appropriate credit card type. You may use Visa, MasterCard, American Express or Discover. Complete the credit card information by clicking on each  (down arrow) adjacent to “Expiration Date:”. Select the expiration date month and year as it appears on your credit card.

Once you have entered your credit card information and verified that it is correct, click on the  (“Purchase”) button. **WARNING: Once you click on the  button, the transaction is complete and an unlock code will be provided. GARMIN cannot make changes to your coverage area, or give refunds or exchanges for Aviation Database unlock codes.** A final web page is displayed with your unit ID, password and unlock code. **PRINT THIS WEB PAGE FOR FUTURE REFERENCE**, or write the information down. You **WILL** need the unlock code to complete the database update. NOTE: You may wish to copy and paste the unlock code, rather than retyping it on your PC.

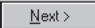



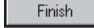
Copy Unlock Code from Here  
to Here



Disable if Errors Occur

## 11

Return to the AVDWebUpdater program and click on the  button to display the program window illustrated here (at left). Paste or retype the unlock code you just received from the GARMIN website in the box below “Please enter your unlock code”. The dashes are optional. If you’ve copied and pasted the unlock code, leave them in. Otherwise, it is not necessary to retype them.

Click on the  button to proceed to the next program window, as shown at left. Click on the  button to begin the update. The AVDWebUpdater program will automatically search the communication (COM) ports for your GPS unit, erase the old database, then transfer the new database to it. It will normally take from 5 to 20 minutes to complete the update.

**TROUBLESHOOTING:** Due to the nature of high-speed data transfer, interference from electrical noise sources is possible. If you encounter errors or suspended operation, try rerunning the update and disabling the “Use high-speed communication rate” box (as shown at left). You should also recheck your cable connections to the PC and GPS unit. If you own a PDA or PocketPC and use a synchronization program—such as ActiveSync or HotSync—disable it. These programs can prevent AVDWebUpdater from using the communication ports. If you still encounter errors, contact our Customer Support Department at 913-397-8200. We’re here to help!